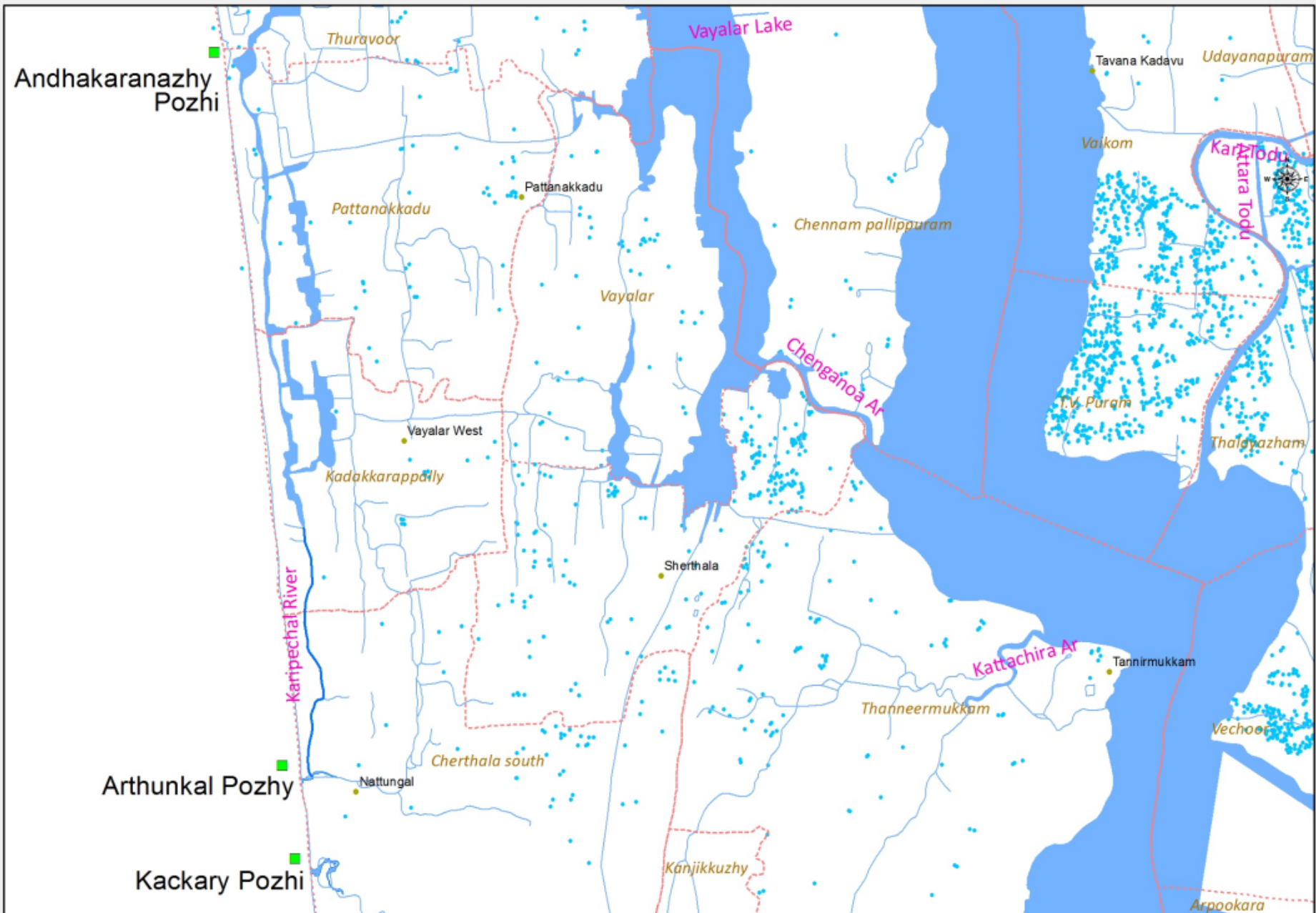


# REJUVENATION OF KARIPPAYAL STREAM


A MODEL CONVERGENCE PROJECT - AN INITIATION OF  
KANJIKKUZHI BLOCK PANCHAYAT, ALAPPUZHA DISTRICT

# Karippayal Stream – *Basic Details*

- District : Alappuzha
  - Block Panchayat : Kanjikuzhy
  - Grama panchyat : Cherthala South, Kadakkarappally
  - Flow path : Arthunkal → Champakkatu → Ambedkar colony  
→ Thaikkal → Kadakkarapally → Arabian sea
  - Length : 9.00km (3km cherthala south G P, 2 KM  
Kadakkarappally GP and 4 km PattanakkadGP)
  - Width : 5.00 to 80.00m
  - Depth : 0.5 to 7.00m
-



## *Back in its glory...*

- Transportation channel- Arthunkal to Kochi
  - Desiltation and side protection – Periodically (every year)
  - Rich source of fresh water fishes
  - Livelihood – fishing, coir production, coconut production Vegetable cultivation etc.
  - Controlled weed growth – good manure for vegetable
- 
- 

# *Why Karuppayil stream needed renovation?*

- Dumping of Waste materials
  - Shrinkage due to encroachment
  - Restricted flow due to silt accumulation
  - Reduced water holding capacity
  - Flooding even in rains of small intensity (people to be shifted to flood relief centers)
  - Home for pathogens and other disease causing microorganisms
  - Reduced fish productivity due to over growth of weeds
  - Groundwater contamination
  - Vegetable cultivation reduced
-

# *Before renovation...*



*Restricted Flow*



*Encroachments*



*Excess weed accumulation*

# *Successful Convergence...* Treated length : 5km

Mahatma Gandhi  
NREGS : Rs 36.77  
lakh

*(Weed clearance,  
Compost with weeds,  
Strengthening of  
sidewall with excavated  
earth, Side clearance,  
Mulching with Silt )*



*Side clearance  
under MNREGS*



---

**Person Days: 13571**

## Excavation using Plan Fund

- Kanjikuzhy Block  
Paanchayat: 28.5 Lakh
- Cherthala South Grama  
Panchayath: 15lakh
- Kadakkarappally  
Gramapanchayat: 12 Lakh
- Total :55lakh
- Length :5.7 km
- Depth 1m
- Excavated  

---

Quantity:55000m<sup>3</sup>



*Working with machinery using  
plan fund*



# *REBIRTH AFTER 40 YEARS*

Increase in waterholding capacity by 55000 CUM

Water flow assured

Enhancement is expected in coconut production in coming years in surrounding area

Prevention of flood during rainy season

Assured control of vectors



*Cherthala South Grama Panchayat*



*Kadakkarappally Grama Panchayath*

A tropical landscape featuring a calm pond in the foreground. The water reflects the surrounding greenery, including numerous palm trees and other tropical plants. In the background, a person is visible standing near a path or clearing. The overall scene is lush and serene, typical of a rural tropical setting.

*EAGERLY WAITING FOR NEXT RAINY  
SEASON*

*THANK YOU..*